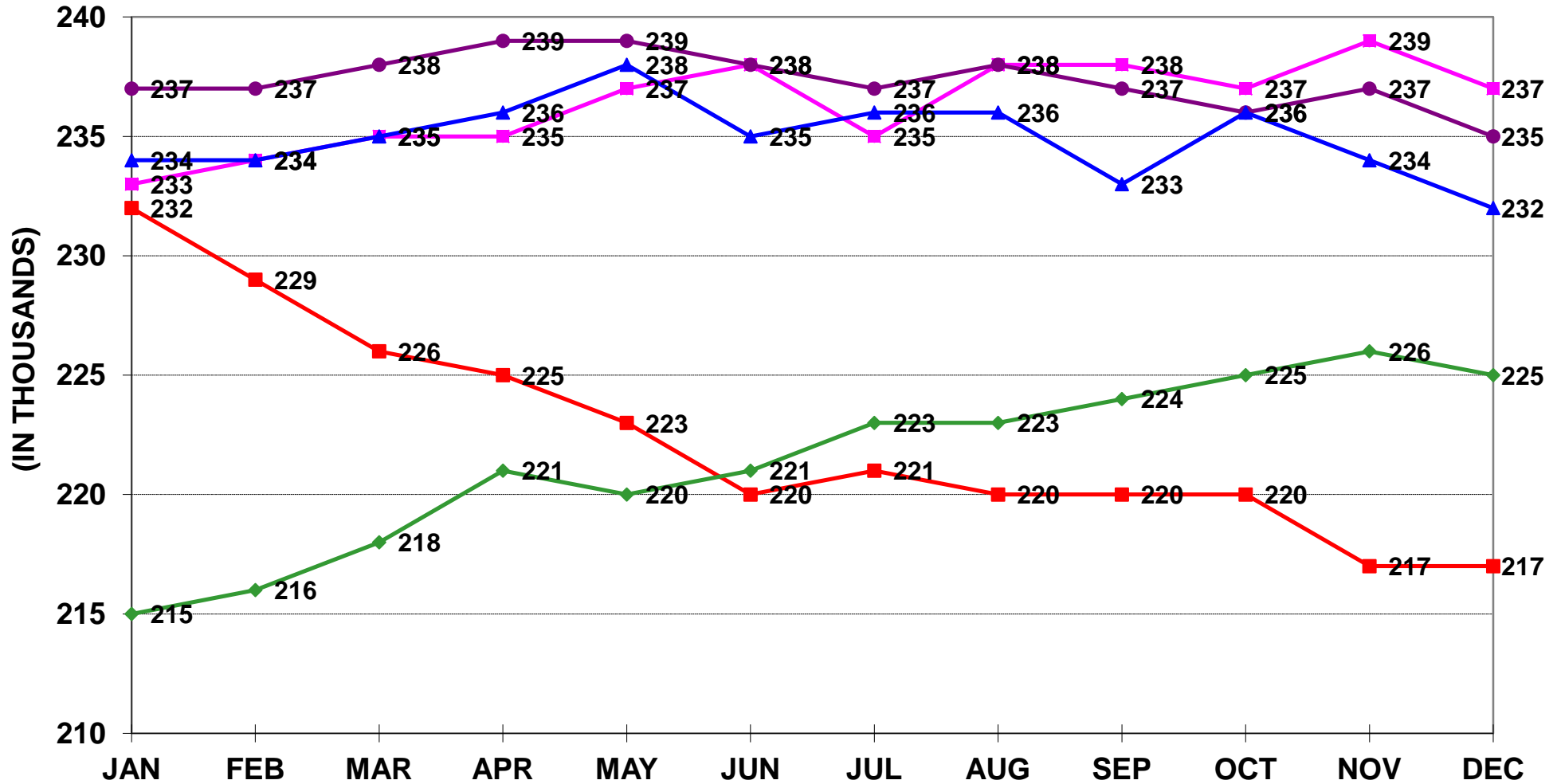


AVERAGE RAILROAD EMPLOYMENT JANUARY 2006 - DECEMBER 2010



The calendar year average employment was 236,000 in 2006, 237,000 in 2007, 235,000 in 2008, 223,000 in 2009 and 221,000 in 2010.

—■— 2006 —●— 2007 —▲— 2008 —■— 2009 —◆— 2010