

Section C -- Unemployment and Sickness Benefits

This section presents data on unemployment and sickness benefits paid to qualified railroad employees under the Railroad Unemployment Insurance Act. Railroad unemployment and sickness benefits, by law, are based on a July-June benefit year. Therefore, railroad unemployment and sickness insurance benefit operations are presented on a benefit year basis, rather than on a fiscal year basis.

Normal benefits of each type may be paid for as many as 130 days in a period of 26 or more weeks but may not exceed the total creditable base year compensation of the beneficiary. After exhaustion of normal benefits, an employee with 10 or more years of railroad service may receive additional benefits in an extended benefit period provided he/she has not voluntarily retired, has not left work without good cause (for unemployment benefits only), and is less than 65 years old (for sickness benefits only). Extended benefits are paid in a 13-week period.

The American Recovery and Reinvestment Act of 2009 (Recovery Act), enacted February 17, 2009, authorized payment of special extended unemployment benefits to railroad employees with jobless claims during the period from July 1, 2008, to June 30, 2009. Key provisions related to railroad unemployment benefits include the following:

- Railroad employees who previously were not eligible for extended unemployment benefits because they did not have 10 years of railroad service may be eligible for up to 65 days within an extended period consisting of 7 consecutive 2-week registration periods.
- Railroad employees who were previously eligible for extended unemployment benefits of up to 65 days may be eligible for extended benefits of up to 130 days within an extended period consisting of 13 consecutive 2-week registration periods.
- The special extended unemployment benefit periods can begin no later than December 31, 2009.

Enacted on November 6, 2009, the Worker, Homeownership and Business Assistance Act of 2009 contained an appropriation of \$175,000,000 to extend the provisions of the Recovery Act by one year. The Tax Relief, Unemployment Insurance Reauthorization, and Job Creation Act of 2010 (enacted December 17, 2010), the Temporary Payroll Tax Cut Continuation Act of 2011 (enacted December 23, 2011), the Middle Class Tax Relief and Job Creation Act of 2012 (enacted February 22, 2012), and the American Taxpayer Relief Act of 2012 (enacted January 2, 2013) each continued the special unemployment benefit provision for periods ranging from two months to one year, for a total extension of three years.

An employee was qualified for benefit year 2012-2013 if in the preceding calendar (base) year his(her) compensation for railroad work, excluding earnings over \$1,330 a month, was \$3,325 or more. Additionally, if the employee was a new entrant to the industry in the base year, he(she) must have had at least five months of service in that year. For a long-service employee (one with 10 or more years of railroad service) a benefit year could be started early if he(she) was not currently qualified but would be qualified for the next benefit year. Also, an extended benefit period could continue beyond the usual June 30 ending date of a benefit year and thus extend the duration of the employee's benefit year. Therefore, the tables in this section on payments for unemployment and sickness that occurred during the July 2012 - June 2013 period include benefits that technically were payable in extensions of the 2011-2012 benefit year or accelerations of the 2013-2014 benefit year as well as those payable for the general benefit year (2012-2013).

Table C1 shows the principal figures for operations in benefit year 2012-2013 and other recent years. Figures in this table refer to payments made and other administrative actions taken under the unemployment and sickness programs during the designated benefit year. Table C2 provides various unemployment and sickness benefit and beneficiary data for benefit years 1983-1984 through 2012-2013. Tables C3 through C7 contain benefit data for unemployment and sickness which occurred in claim periods paid during the particular benefit years stated in the table headings or to which reference is made in the footnotes. Table C8 is a graph of unemployment and sickness beneficiaries by month for benefit year 2012-2013. Table C9 shows the distribution of experience based contribution rates, by number of employers, for 2013.

Payments for maternity under a separate program were discontinued by amendments adopted in 1968. However, provision was made for payment of sickness benefits to female employees prevented from working because of pregnancy or childbirth. The sickness benefit data in this section include such payments.

The unemployment and sickness beneficiary tables for benefit year 2012-2013 include all payments made by June 30, 2013. Benefits are paid for compensable days of unemployment or sickness at a daily rate equal to 60 percent of the employee's last daily rate of pay in the base year, subject to a \$66.00 maximum and a \$12.70 minimum in benefit year 2012-2013.

In accordance with the Balanced Budget and Deficit Control Act of 1985, as amended by the Budget Control Act of 2011, unemployment and sickness benefit amounts reflect a reduction of 9.2% under sequestration for days of unemployment and sickness after February 28, 2013.

The most important qualifications of the data for each table are shown in footnotes to the table.

**Table C1.-- Principal administrative data for the unemployment and sickness benefit programs,
benefit years 2008-2009 through 2012-2013, cash basis**

Item	2008-2009	2009-2010	2010-2011	2011-2012	2012-2013 ¹
Qualified employees.....	255,500	252,300	239,100	235,100	243,800
Maximum daily benefit rate.....	\$61	\$64	\$66	\$66	\$66
UNEMPLOYMENT BENEFITS					
Net amount of benefits paid (thousands)	\$77,804	\$138,175	\$51,424	\$40,691	\$47,174
Payments:²					
Number.....	139,100	241,200	89,300	71,800	83,500
Average amount per two week					
claim period.....	\$520	\$553	\$566	\$573	\$557
Beneficiaries.....	21,400	24,800	11,600	9,200	10,700
Applications received.....	32,600	24,500	14,500	12,300	14,500
Claims received.....	166,900	265,900	101,100	81,400	96,000
Normal benefit accounts exhausted.....	3,100	7,500	2,800	2,200	2,500
Non-compensable waiting period only³..	(4)	(4)	(4)	(4)	(4)
SICKNESS BENEFITS					
Net amount of benefits paid (thousands)	\$45,158	\$52,358	\$51,161	\$49,056	\$43,394
Payments:²					
Number.....	117,200	120,000	117,100	112,200	102,500
Average amount per two week					
claim period.....	\$538	\$565	\$585	\$585	\$571
Beneficiaries.....	17,600	17,800	17,400	16,700	15,800
Applications received.....	21,500	21,500	21,200	20,600	19,400
Claims received.....	137,400	140,400	137,300	131,700	121,100
Normal benefit accounts exhausted.....	3,100	3,200	3,100	3,000	2,600
Non-compensable waiting period only³..	100	100	100	100	(4)

¹ In accordance with the Balanced Budget and Deficit Control Act of 1985, as amended by the Budget Control Act of 2011, amounts reflect a reduction of 9.2% under sequestration for days of unemployment and sickness after February 28, 2013.

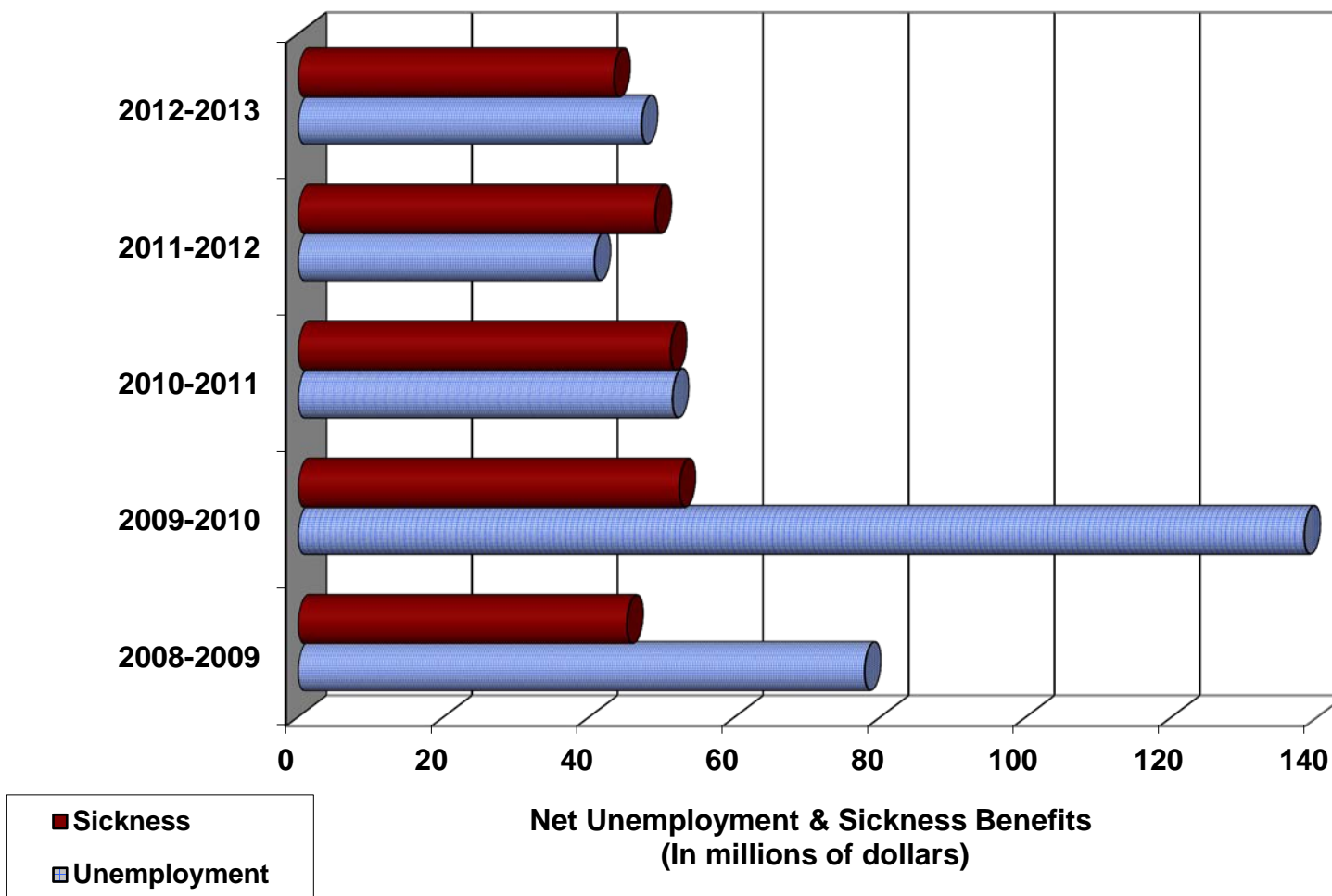
² Not adjusted for recoveries or settlements of underpayments.

³ Benefits are payable for each day of unemployment or sickness in excess of 7 during the first 14-day registration period in a benefit year.

⁴ Less than 50.

NOTE.--Data covered program activities during the year, regardless of when unemployment or sickness occurred. Starting in June 2009, includes temporary extended unemployment benefits authorized by the American Recovery and Reinvestment Act of 2009, the Worker, Homeownership, and Business Assistance Act of 2009, the Tax Relief, Unemployment Insurance Reauthorization, and Job Creation Act of 2010, the Temporary Payroll Tax Cut Continuation Act of 2011, the Middle Class Tax Relief and Job Creation Act of 2012 and the American Taxpayer Relief Act of 2012. Net benefits for these temporary payments were \$1,058,000 in benefit year 2008-2009, \$26,850,000 in 2009-2010, \$9,388,000 in 2010-2011, \$7,011,000 in 2011-2012 and \$6,868,000 in 2012-2013.

**Table C1.--Net benefits under the Railroad Unemployment Insurance Act,
benefit years 2008-2009 through 2012-2013, cash basis**



Starting in June 2009, includes temporary extended unemployment benefits authorized by the the American Recovery and Reinvestment Act of 2009, the Worker, Homeownership, and Business Assistance Act of 2009, the Tax Relief, Unemployment Insurance Reauthorization, and Job Creation Act of 2010, the Temporary Payroll Tax Cut Continuation Act of 2011, the Middle Class Tax Relief and Job Creation Act of 2012, and the American Taxpayer Relief Act of 2012.

In accordance with the Balanced Budget and Deficit Control Act of 1985, as amended by the Budget Control Act of 2011, amounts reflect a reduction of 9.2% under sequestration for days of unemployment and sickness after February 28, 2013.

Table C2.--Unemployment and sickness beneficiaries, benefit averages, and related data, by benefit year, 1983-1984 through 2012-2013

Year	Number of beneficiaries	Amount of gross benefits (thousands)	Beneficiaries per 100 qualified employees ¹	Benefit exhaustions per 100 beneficiaries ¹	Average per beneficiary				
					Creditable registration periods	Creditable/compensable days ²	Daily benefit	Amount of benefits	
								Total for year	Total per week ³
UNEMPLOYMENT									
1983-1984.....	108,500	\$209,126	21	28	9.2	114	\$24.98	\$1,928	\$124.90
1984-1985.....	80,000	127,437	17	19	7.9	96	24.98	1,594	124.90
1985-1986.....	86,800	142,795	19	19	8.0	98	24.98	1,645	124.90
1986-1987.....	75,200	127,235	18	8	8.2	68	24.72	1,693	123.60
1987-1988.....	54,400	84,938	14	18	7.5	63	24.72	1,561	123.60
1988-1989.....	35,200	59,047	10	15	7.0	59	28.29	1,679	141.45
1989-1990.....	29,900	57,488	9	17	7.5	64	30.14	1,921	150.70
1990-1991.....	30,500	63,315	9	18	7.9	67	30.85	2,078	154.25
1991-1992.....	26,400	⁴ 62,185	8	21	8.7	76	30.94	2,353	154.70
1992-1993.....	20,700	⁴ 51,150	7	19	8.5	75	32.82	2,466	164.10
1993-1994.....	18,600	44,016	6	16	8.1	71	32.94	2,348	164.70
1994-1995.....	18,700	39,670	6	15	6.8	59	35.73	2,120	178.65
1995-1996.....	16,800	42,263	6	19	7.8	69	35.86	2,461	179.30
1996-1997.....	15,300	40,228	5	18	7.2	63	40.57	2,564	202.85
1997-1998.....	11,300	30,175	4	18	6.9	60	42.78	2,571	213.90
1998-1999.....	12,600	35,354	5	16	7.0	62	43.81	2,719	219.05
1999-2000.....	13,700	38,317	5	13	6.9	61	45.51	2,759	227.56
2000-2001.....	16,700	46,120	6	13	6.6	57	47.81	2,736	239.05
2001-2002.....	17,800	51,398	7	14	6.7	58	49.62	2,862	248.08
2002-2003.....	15,400	49,563	6	17	7.1	62	51.45	3,182	257.27
2003-2004.....	11,700	41,315	5	19	7.4	64	54.38	3,503	271.89
2004-2005.....	9,300	34,394	4	21	7.4	66	55.27	3,633	276.34
2005-2006.....	8,900	30,478	4	18	6.9	61	55.27	3,393	276.35
2006-2007.....	9,500	32,529	4	17	6.8	60	56.29	3,398	281.47
2007-2008.....	10,100	38,187	4	18	7.2	64	58.40	3,732	292.01
2008-2009.....	21,400	⁵ 82,572	8	13	7.4	63	60.66	3,846	303.32
2009-2010.....	24,800	⁵ 142,609	10	30	10.3	90	63.43	5,715	317.14
2010-2011.....	11,600	⁵ 55,623	5	24	8.4	73	65.23	4,742	326.15
2011-2012.....	9,200	⁵ 45,562	4	24	8.6	75	65.22	4,921	326.12
2012-2013 ⁶	10,700	⁵ 51,648	4	23	8.6	75	63.98	4,792	319.89

See footnotes at end of table.

Table C2.--Unemployment and sickness beneficiaries, benefit averages, and related data, by benefit year, 1983-1984 through 2012-2013 - Continued

Year	Number of beneficiaries	Amount of gross benefits (thousands)	Beneficiaries per 100 qualified employees ¹	Benefit exhaustions per 100 beneficiaries ¹	Average per beneficiary				
					Creditable registration periods	Creditable/ compensable days ²	Daily benefit	Amount of benefits	
								Total for year	Total per week ³
SICKNESS									
1983-1984.....	52,000	\$70,000	10	14	5.8	77	\$24.88	\$1,346	\$124.40
1984-1985.....	48,100	65,763	10	14	5.9	78	24.88	1,368	124.40
1985-1986.....	46,400	69,114	10	17	6.4	85	24.88	1,491	124.40
1986-1987.....	45,200	72,678	11	19	6.9	65	24.69	1,609	123.45
1987-1988.....	41,700	66,809	11	18	6.9	65	24.74	1,602	123.70
1988-1989.....	33,700	62,115	9	19	7.1	67	27.63	1,845	138.15
1989-1990.....	28,200	58,337	8	20	7.2	68	30.24	2,068	151.20
1990-1991.....	25,600	54,528	8	21	7.4	69	30.81	2,133	154.05
1991-1992.....	23,600	52,666	7	21	7.7	72	30.97	2,232	154.85
1992-1993.....	21,800	50,693	7	20	7.6	71	32.80	2,323	164.00
1993-1994.....	21,600	50,613	7	16	7.5	71	32.98	2,328	164.90
1994-1995.....	21,000	54,006	7	20	7.7	72	35.74	2,573	178.70
1995-1996.....	20,400	55,437	7	21	7.9	74	35.94	2,652	179.70
1996-1997.....	20,500	60,566	7	21	7.6	70	40.18	2,825	200.90
1997-1998.....	20,500	63,356	7	18	7.7	69	42.90	2,967	214.50
1998-1999.....	20,600	64,203	8	16	7.6	68	43.91	2,999	219.55
1999-2000.....	22,000	69,992	8	17	7.8	69	45.75	3,152	228.73
2000-2001.....	23,000	78,584	8	19	7.9	71	47.88	3,388	239.42
2001-2002.....	23,000	84,125	9	21	8.2	73	49.85	3,629	249.25
2002-2003.....	22,400	83,690	9	19	8.0	71	51.83	3,701	259.17
2003-2004.....	21,600	83,718	9	19	7.9	70	54.80	3,848	274.02
2004-2005.....	20,200	78,547	8	18	7.8	69	55.89	3,855	279.46
2005-2006.....	19,700	76,041	8	17	7.7	69	55.93	3,835	279.63
2006-2007.....	19,000	73,140	8	17	7.6	67	56.83	3,814	284.17
2007-2008.....	18,400	72,336	7	17	7.5	66	58.76	3,896	293.78
2008-2009.....	17,600	71,704	7	17	7.5	67	60.69	4,040	303.45
2009-2010.....	17,800	76,991	7	17	7.6	68	63.62	4,298	318.11
2010-2011.....	17,400	77,555	7	17	7.6	68	65.66	4,441	328.28
2011-2012.....	16,700	74,457	7	17	7.5	67	65.77	4,413	328.85
2012-2013 ⁶	15,800	66,743	6	16	7.4	65	64.50	4,202	322.48

See footnotes at end of table.

Table C2.--Unemployment and sickness beneficiaries, benefit averages, and related data, by benefit year, 1983-1984 through 2012-2013 - Continued

- ¹ Through benefit year 1985-1986, beneficiaries per 100 qualified employees based on data for current general benefit year; exhaustions per 100 beneficiaries refer to normal benefits only.
- ² Compensable days data was first used in benefit year 1986-1987. Previous years data refers to creditable days.
- ³ Benefit for full week of unemployment or sickness.
- ⁴ Includes benefits under Title V of the Emergency Unemployment Compensation Act of 1991, as amended, which provided extended unemployment benefits to claimants with less than 10 years of service and additional extended benefits to those with 10-14 years.
- ⁵ Includes benefits under the American Recovery and Reinvestment Act of 2009, and the Worker, Homeownership and Business Assistance Act of 2009, as amended, which provided extended unemployment benefits to claimants with less than 10 years of service and additional extended benefits to those with 10 or more years of service.
- ⁶ In accordance with the Balanced Budget and Deficit Control Act of 1985, as amended by the Budget Control Act of 2011, amounts reflect a reduction of 9.2% under sequestration for days of unemployment and sickness after February 28, 2013.

NOTE.--Data include all unemployment and sickness in claims periods begun in the year. For this reason, and because adjustments of benefit amounts have occurred after tabulating cutoff dates, the total amounts of benefits differ substantially from the figures in Tables A1 and C1. Beginning in benefit year 1986-1987 the table was compiled using different source materials than those used in previous years.

Table C3.--Unemployment and sickness beneficiaries in benefit year 2012-2013 and selected data, by completed years of service

Completed years of service	Beneficiaries		Average per beneficiary		
	Total	Per 100 qualified employees	Compensable days on benefit rolls	Daily benefit ¹	Amount of benefits for year ¹
UNEMPLOYMENT²					
Under 10.....	7,363	7	73	\$64.05	\$4,661
10-14	1,412	4	88	63.98	5,616
15 and over	1,939	2	74	63.70	4,689
Total	10,714	4	75	\$63.98	\$4,792
SICKNESS					
Under 10.....	6,096	5	58	\$64.49	\$3,752
10-14.....	2,521	7	68	64.27	4,394
15 and over.....	7,224	7	70	64.58	4,513
Total.....	15,841	6	65	\$64.50	\$4,202

¹ In accordance with the Balanced Budget and Deficit Control Act of 1985, as amended by the Budget Control Act of 2011, amounts reflect a reduction of 9.2% under sequestration for days of unemployment and sickness after February 28, 2013.

² Includes temporary extended unemployment benefits authorized by the American Recovery and Reinvestment Act of 2009, and the the Worker, Homeownership, and Business Assistance Act of 2009, as amended.

**Table C4.--Unemployment and sickness beneficiaries, and total gross benefits for the year,
by state, benefit year 2012-2013**

States	Unemployment benefits ¹		Sickness benefits	
	Beneficiaries	Total amount ²	Beneficiaries	Total amount ²
Alabama.....	280	\$1,362,000	247	\$1,070,000
Alaska.....	57	413,000	5	15,000
Arizona.....	110	496,000	149	626,000
Arkansas.....	115	455,000	256	977,000
California.....	417	2,403,000	983	4,550,000
Colorado.....	134	574,000	180	630,000
Connecticut.....	33	212,000	97	390,000
Delaware.....	31	178,000	102	448,000
Washington DC.....	9	29,000	16	71,000
Florida.....	273	1,496,000	288	1,216,000
Georgia.....	352	1,886,000	467	1,916,000
Hawaii.....
Idaho.....	61	228,000	80	275,000
Illinois.....	839	4,578,000	1,313	5,511,000
Indiana.....	435	1,971,000	714	3,012,000
Iowa.....	223	911,000	253	899,000
Kansas.....	181	776,000	297	1,144,000
Kentucky.....	443	2,097,000	422	1,941,000
Louisiana.....	188	850,000	205	897,000
Maine.....	36	180,000	32	135,000
Maryland.....	219	1,441,000	350	1,610,000
Massachusetts.....	72	427,000	246	1,154,000
Michigan.....	260	1,094,000	336	1,491,000
Minnesota.....	292	1,109,000	320	1,210,000
Mississippi.....	97	425,000	119	491,000
Missouri.....	396	1,741,000	438	1,702,000
Montana.....	239	920,000	131	553,000
Nebraska.....	337	1,503,000	831	2,871,000
Nevada.....	38	175,000	43	232,000
New Hampshire.....	17	87,000	32	155,000
New Jersey.....	175	931,000	748	2,888,000
New Mexico.....	59	376,000	90	373,000

See footnotes at end of table.

**Table C4.--Unemployment and sickness beneficiaries, and total gross benefits for the year,
by state, benefit year 2012-2013 - Continued**

States	Unemployment benefits ¹		Sickness benefits	
	Beneficiaries	Total amount ²	Beneficiaries	Total amount ²
New York.....	429	\$2,006,000	699	\$3,063,000
North Carolina.....	209	1,126,000	189	884,000
North Dakota.....	85	273,000	115	385,000
Ohio.....	515	2,262,000	640	2,756,000
Oklahoma.....	76	386,000	91	450,000
Oregon.....	108	534,000	155	682,000
Pennsylvania.....	462	2,078,000	1,093	4,976,000
Rhode Island.....	15	76,000	46	186,000
South Carolina.....	140	722,000	147	647,000
South Dakota.....	41	175,000	60	203,000
Tennessee.....	289	1,539,000	341	1,449,000
Texas.....	558	2,947,000	878	3,717,000
Utah.....	86	303,000	117	474,000
Vermont.....	9	29,000	3	17,000
Virginia.....	378	1,651,000	454	2,106,000
Washington.....	197	1,124,000	291	1,258,000
West Virginia.....	292	1,396,000	262	1,285,000
Wisconsin.....	246	1,030,000	291	1,117,000
Wyoming.....	159	665,000	173	611,000
Total³	10,714	\$51,648,000	15,841	\$66,743,000

¹ Includes temporary extended unemployment benefits authorized by the American Recovery and Reinvestment Act of 2009, and the Worker, Homeownership, and Business Assistance Act of 2009, as amended.

² In accordance with the Balanced Budget and Deficit Control Act of 1985, as amended by the Budget Control Act of 2011, amounts reflect a reduction of 9.2% under sequestration for days of unemployment and sickness after February 28, 2013.

³ Includes beneficiaries whose state of residence was unknown.

NOTE.--Detail may not add to totals due to rounding.

Data is partly estimated.

Table C5.--Beneficiaries and selected averages for benefit year 2012-2013 unemployment, by age and sex

Age on birthday in 2012	Number of beneficiaries				Average per beneficiary		
	Total	Female	Qualified employees	Per 100 qualified employees	Compensable days of unemployment	Daily benefit ¹	Amount of benefits for year ¹
Under 25.....	343	13	4,900	7	67	\$63.69	\$4,274
25 to 29.....	1,149	41	17,500	7	69	64.14	4,404
30 to 34.....	1,726	83	26,200	7	73	64.27	4,666
35 to 39.....	1,641	79	29,800	6	74	64.20	4,731
40 to 44.....	1,655	104	33,100	5	76	64.08	4,862
45 to 49.....	1,290	90	28,800	4	81	63.86	5,185
50 to 54.....	1,095	92	31,000	4	79	63.99	5,071
55 to 59.....	1,114	79	42,300	3	77	63.63	4,909
60 to 64.....	598	61	24,900	2	74	63.76	4,740
65 to 69.....	92	6	3,900	2	66	61.13	4,010
70 and older.....	11	3	700	2	79	47.71	3,778
ALL BENEFICIARIES							
Male.....	10,063	221,300	5	74	\$63.99	\$4,704
Female.....	651	651	22,000	3	96	\$63.79	\$6,155
Total².....	10,714	651	243,800	4	75	\$63.98	\$4,792

¹ In accordance with the Balanced Budget and Deficit Control Act of 1985, as amended by the Budget Control Act of 2011, amounts reflect a reduction of 9.2% under sequestration for days of unemployment and sickness after February 28, 2013.

² Includes employees whose sex and/or age was not reported.

NOTE.-- Beneficiary figures based on payments made in the year, regardless of the benefit year for which payment was made. Qualified employees for 2012-2013 benefit year are those qualified on the basis of 2011 compensation. Includes temporary extended unemployment benefits authorized by the American Recovery and Reinvestment Act of 2009, and the Worker, Homeownership, and Business Assistance Act of 2009, as amended.

Table C6.--Beneficiaries and selected averages for benefit year 2012-2013 sickness, by age and sex

Age on birthday in 2012	Number of beneficiaries				Average per beneficiary		
	Total	Female	Qualified employees	Per 100 qualified employees	Compensable days of unemployment	Daily benefit ¹	Amount of benefits for year ¹
Under 25.....	110	7	4,900	2	50	\$64.24	\$3,241
25 to 29.....	607	103	17,500	3	56	64.31	3,613
30 to 34.....	1,230	224	26,200	5	55	64.82	3,582
35 to 39.....	1,634	213	29,800	5	58	64.64	3,724
40 to 44.....	1,917	215	33,100	6	62	64.46	4,013
45 to 49.....	1,806	241	28,800	6	65	64.57	4,195
50 to 54.....	2,271	307	31,000	7	67	64.24	4,286
55 to 59.....	3,611	290	42,300	9	69	64.58	4,424
60 to 64.....	2,297	224	24,900	9	74	64.88	4,809
65 to 69.....	326	48	3,900	8	69	62.54	4,321
70 and older.....	32	7	700	5	57	45.10	2,574
ALL BENEFICIARIES							
Male.....	13,962	221,300	6	66	\$64.53	\$4,230
Female.....	1,879	1,879	22,000	9	62	\$64.23	\$3,990
Total².....	15,841	1,879	243,800	6	65	\$64.50	\$4,202

¹ In accordance with the Balanced Budget and Deficit Control Act of 1985, as amended by the Budget Control Act of 2011, amounts reflect a reduction of 9.2% under sequestration for days of unemployment and sickness after February 28, 2013.

² Includes employees whose sex and/or age was not reported.

NOTE.-- Beneficiary figures based on payments made in the year, regardless of the benefit year for which payment was made. Qualified employees for 2012-2013 benefit year are those qualified on the basis of 2011 compensation.

Table C7.--Beneficiaries and average compensable days for benefit year 2012-2013 sickness, by type of sickness

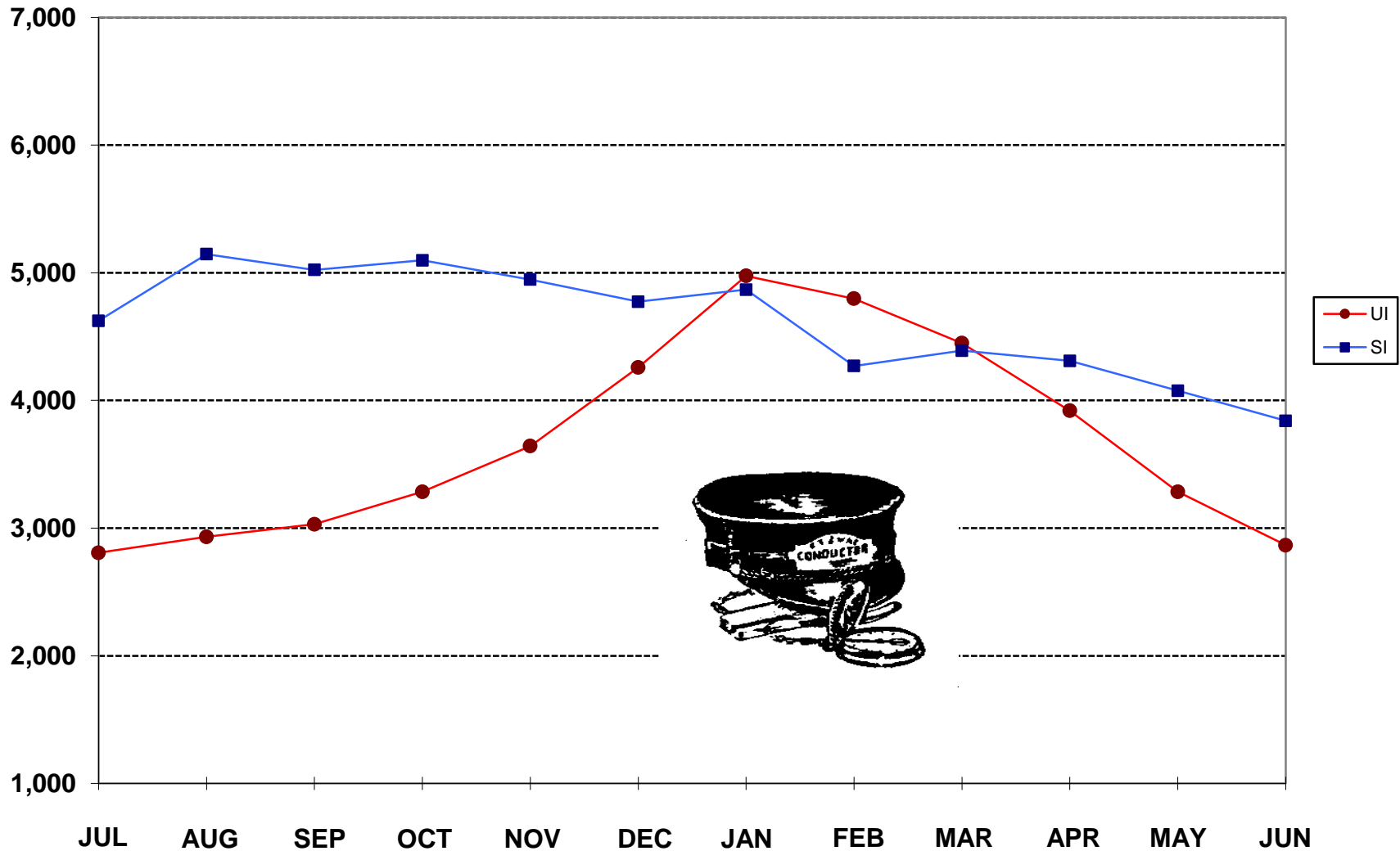
International list no.	Type of sickness	Beneficiaries	Average compensable days of sickness
001-139	Infective and parasitic diseases	71	48
140-239	Neoplasms.....	864	67
240-279	Endocrine, nutritional and metabolic diseases and immunity disorders.....	233	58
280-289	Diseases of the blood and blood forming organs.....	15	57
290-319	Mental disorders.....	1,770	65
320-389	Diseases of the nervous system and sense organs.....	699	66
390-459	Diseases of the circulatory system.....	1,111	65
460-519	Diseases of the respiratory system.....	404	43
520-579	Diseases of the digestive system.....	1,082	35
580-629	Diseases of the genitourinary system.....	209	51
630-679	Pregnancy, childbirth, and the puerperium, total ¹	270	41
680-709	Diseases of the skin and subcutaneous tissue.....	133	46
710-739	Diseases of the musculoskeletal system and connective tissue.....	3,677	83
740-759	Congenital anomalies.....	153	55
780-799	Symptoms and ill-defined conditions and perinatal morbidity and mortality.....	1,070	60
800-999	Injury and complications of poisoning.....	4,080	64
Total.....		15,841	65

¹ Includes normal periods of pregnancy and the puerperium in addition to morbidities included in the classifications numbered 630-679.

NOTE.--Type of sickness is determined by the first sickness for which payment was made. Classification by sickness group is in accordance with The International Classification of Diseases, Clinical Modification (ICD-9-CM), United States Government.

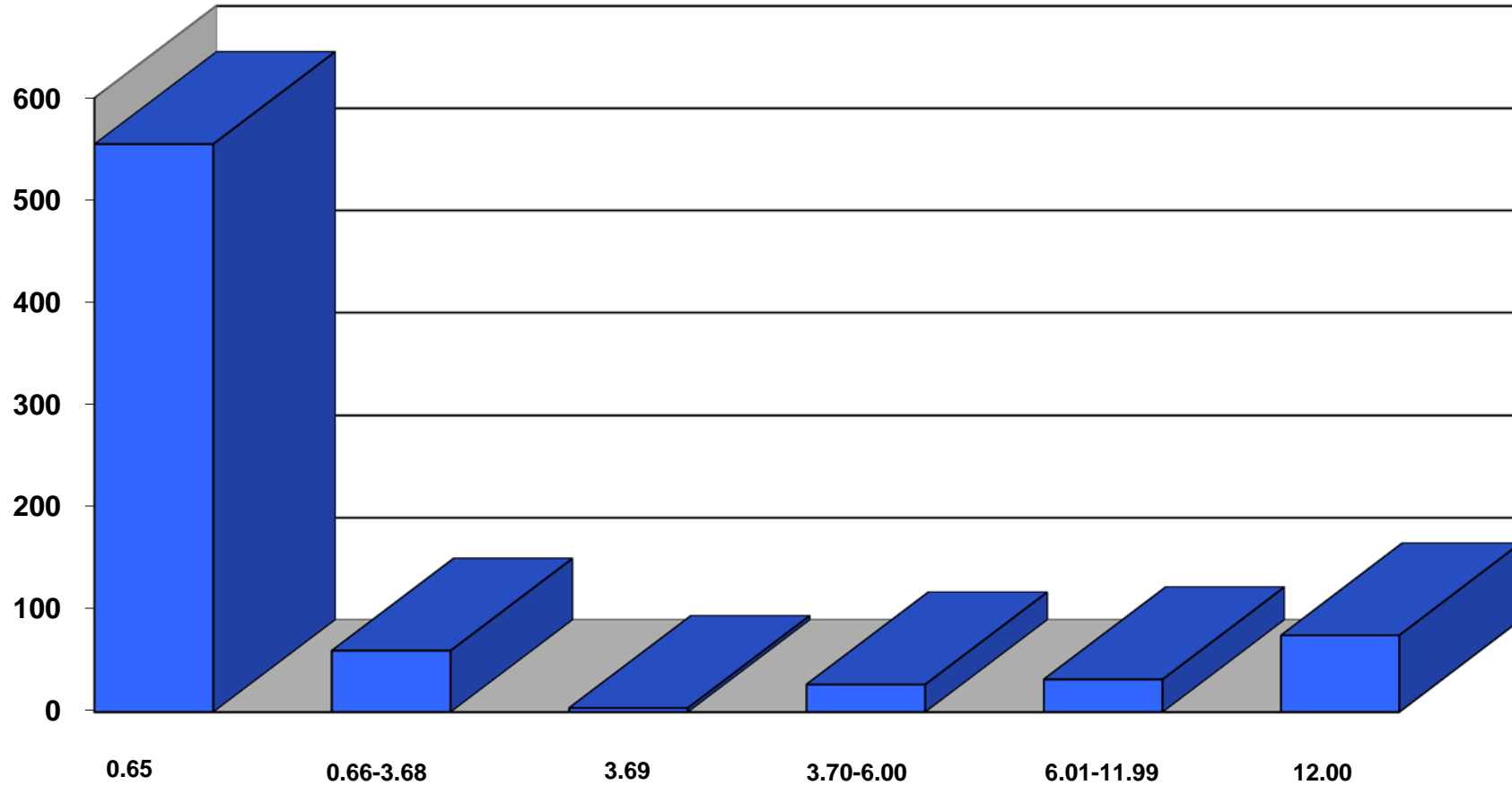
**TABLE C8. - UI & SI BENEFICIARIES
BY MONTH FOR BENEFIT YEAR 2012-2013**

Beneficiaries



**TABLE C9. - EXPERIENCE RATING DISTRIBUTION,
BY NUMBER OF EMPLOYERS, 2013**

EMPLOYERS



CONTRIBUTION RATE (percent)