

Section C -- Unemployment and Sickness Benefits

This section presents data on unemployment and sickness benefits paid to qualified railroad employees under the Railroad Unemployment Insurance Act. Railroad unemployment and sickness benefits, by law, are based on a July-June benefit year. Therefore, railroad unemployment and sickness insurance benefit operations are presented on a benefit year basis, rather than on a fiscal year basis.

Normal benefits of each type may be paid for as many as 130 days in a period of 26 or more weeks but may not exceed the total creditable base year compensation of the beneficiary. After exhaustion of normal benefits, an employee with 10 or more years of railroad service may receive additional benefits in an extended benefit period provided he(she) has not voluntarily retired, has not left work without good cause (for unemployment benefits only), and is less than 65 years old (for sickness benefits only). Extended benefits are paid in a 13-week period.

The American Recovery and Reinvestment Act of 2009 (Recovery Act), enacted February 17, 2009, authorized payment of special extended unemployment benefits to railroad employees with jobless claims during the period from July 1, 2008, to June 30, 2009. Key provisions related to railroad unemployment benefits include the following:

- Railroad employees who previously were not eligible for extended unemployment benefits because they did not have 10 years of railroad service may be eligible for up to 65 days within an extended period consisting of 7 consecutive 2-week registration periods.
- Railroad employees who were previously eligible for extended unemployment benefits of up to 65 days may be eligible for extended benefits of up to 130 days within an extended period consisting of 13 consecutive 2-week registration periods.
- The special extended unemployment benefit periods can begin no later than December 31, 2009.

Enacted on November 6, 2009, the Worker, Homeownership and Business Assistance Act of 2009 contained an appropriation of \$175,000,000 to extend the provisions of the Recovery Act by one year. The Tax Relief, Unemployment Insurance Reauthorization, and Job Creation Act of 2010 (enacted December 17, 2010), the Temporary Payroll Tax Cut Continuation Act of 2011 (enacted December 23, 2011), and the Middle Class Tax Relief and Job Creation Act of 2012 (enacted February 22, 2012) each continued the special unemployment benefit provision for periods ranging from two months to one year, for a total extension of two years.

An employee was qualified for benefit year 2011-2012 if in the preceding calendar (base) year his(her) compensation for railroad work, excluding earnings over \$1,330 a month, was \$3,325 or more. Additionally, if the employee was a new entrant to the industry in the base year, he(she) must have had at least five months of service in that year. For a long-service employee (one with 10 or more years of railroad service) a benefit year could be started early if he(she) was not currently qualified but would be qualified for the next benefit year. Also, an extended benefit period could continue beyond the usual June 30 ending date of a benefit year and thus extend the duration of the employee's benefit year. Therefore, the tables in this section on payments for unemployment and sickness that occurred during the July 2011 - June 2012 period include benefits that technically were payable in extensions of the 2010-2011 benefit year or accelerations of the 2012-2013 benefit year as well as those payable for the general benefit year (2011-2012).

Table C1 shows the principal figures for operations in benefit year 2011-2012 and other recent years. Figures in this table refer to payments made and other administrative actions taken under the unemployment and sickness programs during the designated benefit year. Table C2 provides various unemployment and sickness benefit and beneficiary data for benefit years 1982-1983 through 2011-2012. Tables C3 through C7 contain benefit data for unemployment and sickness which occurred in claim periods paid during the particular benefit years stated in the table headings or to which reference is made in the footnotes. Table C8 is a graph of unemployment and sickness beneficiaries by month for benefit year 2011-2012. Table C9 shows the distribution of experience based contribution rates, by number of employers, for 2012.

Payments for maternity under a separate program were discontinued by amendments adopted in 1968. However, provision was made for payment of sickness benefits to female employees prevented from working because of pregnancy or childbirth. The sickness benefit data in this section include such payments.

The unemployment and sickness beneficiary tables for benefit year 2011-2012 include all payments made by June 30, 2012. Benefits are paid for compensable days of unemployment or sickness at a daily rate equal to 60 percent of the employee's last daily rate of pay in the base year, subject to a \$66.00 maximum and a \$12.70 minimum in benefit year 2011-2012.

The most important qualifications of the data for each table are shown in footnotes to the table.

**Table C1.-- Principal administrative data for the unemployment and sickness benefit programs,
benefit years 2007-2008 through 2011-2012, cash basis**

Item	2007-2008	2008-2009	2009-2010	2010-2011	2011-2012
Qualified employees.....	255,200	255,500	252,300	239,100	235,100
Maximum daily benefit rate.....	\$59	\$61	\$64	\$66	\$66
UNEMPLOYMENT BENEFITS					
Net amount of benefits paid (thousands)	\$32,212	\$77,804	\$138,175	\$51,424	\$40,691
Payments:¹					
Number.....	64,600	139,100	241,200	89,300	71,800
Average amount per two week					
claim period.....	\$519	\$520	\$553	\$566	\$573
Beneficiaries.....	10,100	21,400	24,800	11,600	9,200
Applications received.....	13,200	32,600	24,500	14,500	12,300
Claims received.....	78,000	166,900	265,900	101,100	81,400
Normal benefit accounts exhausted.....	2,000	3,100	7,500	2,800	2,200
Non-compensable waiting period only²..	(3)	(3)	(3)	(3)	(3)
SICKNESS BENEFITS					
Net amount of benefits paid (thousands)	\$46,115	\$45,158	\$52,358	\$51,161	\$49,056
Payments:¹					
Number.....	122,400	117,200	120,000	117,100	112,200
Average amount per two week					
claim period.....	\$520	\$538	\$565	\$585	\$585
Beneficiaries.....	18,400	17,600	17,800	17,400	16,700
Applications received.....	22,500	21,500	21,500	21,200	20,600
Claims received.....	143,000	137,400	140,400	137,300	131,700
Normal benefit accounts exhausted.....	3,300	3,100	3,200	3,100	3,000
Non-compensable waiting period only²..	100	100	100	100	100

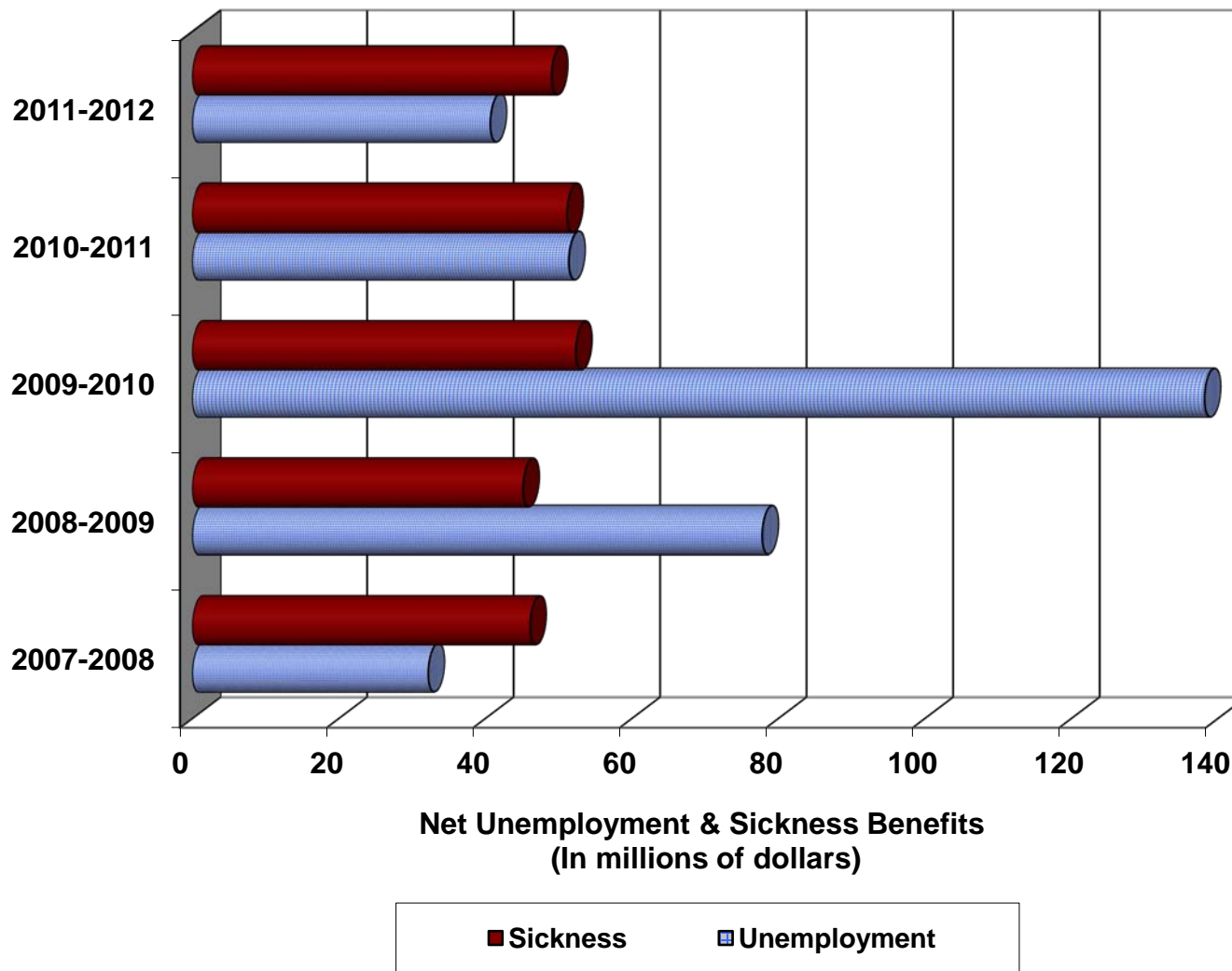
¹ Not adjusted for recoveries or settlements of underpayments.

² Benefits are payable for each day of unemployment or sickness in excess of 7 during the first 14-day registration period in a benefit year.

³ Less than 50.

NOTE.--Data covered program activities during the year, regardless of when unemployment or sickness occurred. Starting in June 2009, includes temporary extended unemployment benefits authorized by the American Recovery and Reinvestment Act of 2009, the Worker, Homeownership, and Business Assistance Act of 2009, the Tax Relief, Unemployment Insurance Reauthorization, and Job Creation Act of 2010, the Temporary Payroll Tax Cut Continuation Act of 2011, and the Middle Class Tax Relief and Job Creation Act of 2012. Net benefits for these temporary payments were \$1,058,000 in benefit year 2008-2009, \$26,850,000 in 2009-2010, \$9,388,000 in 2010-2011 and \$7,011,000 in 2011-2012.

**Table C1.--Net benefits under the Railroad Unemployment Insurance Act,
benefit years 2007-2008 through 2011-2012, cash basis**



Starting in June 2009, includes temporary extended unemployment benefits authorized by the the American Recovery and Reinvestment Act of 2009, the Worker, Homeownership, and Business Assistance Act of 2009, the Tax Relief, Unemployment Insurance Reauthorization, and Job Creation Act of 2010, the Temporary Payroll Tax Cut Continuation Act of 2011, and the Middle Class Tax Relief and Job Creation Act of 2012.

Table C2.--Unemployment and sickness beneficiaries, benefit averages, and related data, by benefit year, 1982-1983 through 2011-2012

Year	Number of beneficiaries	Amount of gross benefits (thousands)	Beneficiaries per 100 qualified employees ¹	Benefit exhaustions per 100 beneficiaries ¹	Average per beneficiary				
					Creditable registration periods	Creditable/compensable days ²	Daily benefit	Amount of benefits	
								Total for year	Total per week ³
UNEMPLOYMENT									
1982-1983.....	174,700	\$398,448	30	37	10.6	134	\$24.99	\$2,281	\$124.95
1983-1984.....	108,500	209,126	21	28	9.2	114	24.98	1,928	124.90
1984-1985.....	80,000	127,437	17	19	7.9	96	24.98	1,594	124.90
1985-1986.....	86,800	142,795	19	19	8.0	98	24.98	1,645	124.90
1986-1987.....	75,200	127,235	18	8	8.2	68	24.72	1,693	123.60
1987-1988.....	54,400	84,938	14	18	7.5	63	24.72	1,561	123.60
1988-1989.....	35,200	59,047	10	15	7.0	59	28.29	1,679	141.45
1989-1990.....	29,900	57,488	9	17	7.5	64	30.14	1,921	150.70
1990-1991.....	30,500	63,315	9	18	7.9	67	30.85	2,078	154.25
1991-1992.....	26,400	⁴ 62,185	8	21	8.7	76	30.94	2,353	154.70
1992-1993.....	20,700	⁴ 51,150	7	19	8.5	75	32.82	2,466	164.10
1993-1994.....	18,600	44,016	6	16	8.1	71	32.94	2,348	164.70
1994-1995.....	18,700	39,670	6	15	6.8	59	35.73	2,120	178.65
1995-1996.....	16,800	42,263	6	19	7.8	69	35.86	2,461	179.30
1996-1997.....	15,300	40,228	5	18	7.2	63	40.57	2,564	202.85
1997-1998.....	11,300	30,175	4	18	6.9	60	42.78	2,571	213.90
1998-1999.....	12,600	35,354	5	16	7.0	62	43.81	2,719	219.05
1999-2000.....	13,700	38,317	5	13	6.9	61	45.51	2,759	227.56
2000-2001.....	16,700	46,120	6	13	6.6	57	47.81	2,736	239.05
2001-2002.....	17,800	51,398	7	14	6.7	58	49.62	2,862	248.08
2002-2003.....	15,400	49,563	6	17	7.1	62	51.45	3,182	257.27
2003-2004.....	11,700	41,315	5	19	7.4	64	54.38	3,503	271.89
2004-2005.....	9,300	34,394	4	21	7.4	66	55.27	3,633	276.34
2005-2006.....	8,900	30,478	4	18	6.9	61	55.27	3,393	276.35
2006-2007.....	9,500	32,529	4	17	6.8	60	56.29	3,398	281.47
2007-2008.....	10,100	38,187	4	18	7.2	64	58.40	3,732	292.01
2008-2009.....	21,400	⁵ 82,572	8	13	7.4	63	60.66	3,846	303.32
2009-2010.....	24,800	⁵ 142,609	10	30	10.3	90	63.43	5,715	317.14
2010-2011.....	11,600	⁵ 55,623	5	24	8.4	73	65.23	4,742	326.15
2011-2012.....	9,200	⁵ 45,562	4	24	8.6	75	65.22	4,921	326.12

See footnotes at end of table.

Table C2.--Unemployment and sickness beneficiaries, benefit averages, and related data, by benefit year, 1982-1983 through 2011-2012 - Continued

					Average per beneficiary				
Year	Number of beneficiaries	Amount of gross benefits (thousands)	Beneficiaries per 100 qualified employees ¹	Benefit exhaustions per 100 beneficiaries ¹	Creditable registration periods	Creditable/ compensable days ²	Daily benefit	Amount of benefits	
								Total for year	Total per week ³
SICKNESS									
1982-1983.....	59,300	\$81,077	10	15	5.8	78	\$24.88	\$1,366	\$124.40
1983-1984.....	52,000	70,000	10	14	5.8	77	24.88	1,346	124.40
1984-1985.....	48,100	65,763	10	14	5.9	78	24.88	1,368	124.40
1985-1986.....	46,400	69,114	10	17	6.4	85	24.88	1,491	124.40
1986-1987.....	45,200	72,678	11	19	6.9	65	24.69	1,609	123.45
1987-1988.....	41,700	66,809	11	18	6.9	65	24.74	1,602	123.70
1988-1989.....	33,700	62,115	9	19	7.1	67	27.63	1,845	138.15
1989-1990.....	28,200	58,337	8	20	7.2	68	30.24	2,068	151.20
1990-1991.....	25,600	54,528	8	21	7.4	69	30.81	2,133	154.05
1991-1992.....	23,600	52,666	7	21	7.7	72	30.97	2,232	154.85
1992-1993.....	21,800	50,693	7	20	7.6	71	32.80	2,323	164.00
1993-1994.....	21,600	50,613	7	16	7.5	71	32.98	2,328	164.90
1994-1995.....	21,000	54,006	7	20	7.7	72	35.74	2,573	178.70
1995-1996.....	20,400	55,437	7	21	7.9	74	35.94	2,652	179.70
1996-1997.....	20,500	60,566	7	21	7.6	70	40.18	2,825	200.90
1997-1998.....	20,500	63,356	7	18	7.7	69	42.90	2,967	214.50
1998-1999.....	20,600	64,203	8	16	7.6	68	43.91	2,999	219.55
1999-2000.....	22,000	69,992	8	17	7.8	69	45.75	3,152	228.73
2000-2001.....	23,000	78,584	8	19	7.9	71	47.88	3,388	239.42
2001-2002.....	23,000	84,125	9	21	8.2	73	49.85	3,629	249.25
2002-2003.....	22,400	83,690	9	19	8.0	71	51.83	3,701	259.17
2003-2004.....	21,600	83,718	9	19	7.9	70	54.80	3,848	274.02
2004-2005.....	20,200	78,547	8	18	7.8	69	55.89	3,855	279.46
2005-2006.....	19,700	76,041	8	17	7.7	69	55.93	3,835	279.63
2006-2007.....	19,000	73,140	8	17	7.6	67	56.83	3,814	284.17
2007-2008.....	18,400	72,336	7	17	7.5	66	58.76	3,896	293.78
2008-2009.....	17,600	71,704	7	17	7.5	67	60.69	4,040	303.45
2009-2010.....	17,800	76,991	7	17	7.6	68	63.62	4,298	318.11
2010-2011.....	17,400	77,555	7	17	7.6	68	65.66	4,441	328.28
2011-2012.....	16,700	74,457	7	17	7.5	67	65.77	4,413	328.85

See footnotes at end of table.

Table C2.--Unemployment and sickness beneficiaries, benefit averages, and related data, by benefit year, 1982-1983 through 2011-2012 - Continued

- ¹ Through benefit year 1985-1986, beneficiaries per 100 qualified employees based on data for current general benefit year; exhaustions per 100 beneficiaries refer to normal benefits only.
- ² Compensable days data was first used in benefit year 1986-1987. Previous years data refers to creditable days.
- ³ Benefit for full week of unemployment or sickness.
- ⁴ Includes benefits under Title V of the Emergency Unemployment Compensation Act of 1991, as amended, which provided extended unemployment benefits to claimants with less than 10 years of service and additional extended benefits to those with 10-14 years.
- ⁵ Includes benefits under the American Recovery and Reinvestment Act of 2009, and the Worker, Homeownership and Business Assistance Act of 2009, as amended, which provided extended unemployment benefits to claimants with less than 10 years of service and additional extended benefits to those with 10 or more years of service.

NOTE.--Data include all unemployment and sickness in claims periods begun in the year. For this reason, and because adjustments of benefit amounts have occurred after tabulating cutoff dates, the total amounts of benefits differ substantially from the figures in Tables A1 and C1. Beginning in benefit year 1986-1987 the table was compiled using different source materials than those used in previous years.

Table C3.--Unemployment and sickness beneficiaries in benefit year 2011-2012 and selected data, by completed years of service

Completed years of service	Beneficiaries		Average per beneficiary		
	Total	Per 100 qualified employees	Compensable days on benefit rolls	Daily benefit	Amount of benefits for year
UNEMPLOYMENT					
Under 10	5,719	6	73	\$65.17	\$4,782
10-14	1,484	4	86	65.30	5,598
15 and over	1,960	2	74	65.33	4,814
Total	9,163	4	75	\$65.22	\$4,921
SICKNESS					
Under 10	6,055	6	59	\$65.62	\$3,862
10-14	2,677	7	68	65.59	4,489
15 and over	8,016	8	73	65.92	4,805
Total	16,748	7	67	\$65.77	\$4,413

**Table C4.--Unemployment and sickness beneficiaries, and total gross benefits for the year,
by state, benefit year 2011-2012**

States	Unemployment benefits ¹		Sickness benefits	
	Beneficiaries	Total amount	Beneficiaries	Total amount
Alabama	230	\$1,100,000	259	\$1,181,000
Alaska	59	430,000	1	4,000
Arizona	112	583,000	176	817,000
Arkansas	103	613,000	227	990,000
California	489	3,110,000	1,059	4,697,000
Colorado	109	524,000	177	789,000
Connecticut	41	198,000	107	494,000
Delaware	27	181,000	123	629,000
Washington DC	8	57,000	21	95,000
Florida	256	1,600,000	315	1,352,000
Georgia	376	1,913,000	491	2,252,000
Hawaii
Idaho	65	271,000	84	312,000
Illinois	701	3,680,000	1,374	5,903,000
Indiana	395	1,855,000	755	3,351,000
Iowa	196	730,000	264	1,024,000
Kansas	151	753,000	335	1,294,000
Kentucky	235	957,000	407	1,851,000
Louisiana	143	702,000	239	1,250,000
Maine	57	252,000	39	192,000
Maryland	145	748,000	347	1,559,000
Massachusetts	93	524,000	250	1,122,000
Michigan	236	1,112,000	327	1,462,000
Minnesota	186	728,000	304	1,235,000
Mississippi	90	476,000	116	460,000
Missouri	306	1,510,000	455	1,983,000
Montana	162	789,000	144	677,000
Nebraska	363	1,232,000	845	3,124,000
Nevada	47	245,000	52	261,000
New Hampshire	13	52,000	27	118,000
New Jersey	163	1,059,000	725	2,900,000
New Mexico	42	217,000	96	473,000

See footnotes at end of table.

**Table C4.--Unemployment and sickness beneficiaries, and total gross benefits for the year,
by state, benefit year 2011-2012 - Continued**

States	Unemployment benefits ¹		Sickness benefits	
	Beneficiaries	Total amount	Beneficiaries	Total amount
New York.	403	\$2,187,000	851	\$4,271,000
North Carolina.	143	932,000	192	963,000
North Dakota.	57	172,000	104	381,000
Ohio.	358	1,772,000	709	3,210,000
Oklahoma.	73	351,000	95	415,000
Oregon.	151	769,000	167	799,000
Pennsylvania.	400	1,999,000	1,102	5,471,000
Rhode Island.	11	78,000	45	151,000
South Carolina.	118	503,000	165	770,000
South Dakota.	42	163,000	60	249,000
Tennessee.	242	1,190,000	413	1,975,000
Texas.	538	2,768,000	976	4,417,000
Utah.	117	512,000	113	500,000
Vermont.	6	39,000	3	5,000
Virginia.	198	866,000	492	2,348,000
Washington.	206	1,024,000	309	1,276,000
West Virginia.	137	502,000	314	1,473,000
Wisconsin.	201	831,000	298	1,129,000
Wyoming.	163	702,000	189	768,000
Total²	9,163	\$45,562,000	16,748	\$74,457,000

¹ Starting in June 2009, includes temporary extended unemployment benefits authorized by the American Recovery and Reinvestment Act of 2009. Beginning in November 2009, temporary extended unemployment benefits are also being paid under the Worker, Homeownership, and Business Assistance Act of 2009, as amended.

² Includes beneficiaries whose state of residence was unknown.

NOTE.--Detail may not add to totals due to rounding.

Data is partly estimated.

Table C5.--Beneficiaries and selected averages for benefit year 2011-2012 unemployment, by age and sex

Age on birthday in 2011	Number of beneficiaries				Average per beneficiary		
	Total	Female	Qualified employees	Per 100 qualified employees	Compensable days of unemployment	Daily benefit	Amount of benefits for year
Under 25.....	143	7	3,400	4	72	\$63.71	\$4,606
25 to 29.....	839	62	15,200	6	71	65.64	4,675
30 to 34.....	1,317	64	23,900	6	74	65.63	4,827
35 to 39.....	1,338	91	27,600	5	76	65.65	5,001
40 to 44.....	1,412	95	30,700	5	78	65.28	5,119
45 to 49.....	1,186	106	27,700	4	79	64.80	5,104
50 to 54.....	1,073	88	33,200	3	77	65.57	5,042
55 to 59.....	1,192	96	44,300	3	75	64.73	4,831
60 to 64.....	568	62	24,800	2	73	64.74	4,722
65 to 69.....	88	6	3,500	2	57	61.06	3,478
70 and older.....	7	600	1	55	60.42	3,349
ALL BENEFICIARIES							
Male.....	8,486	213,600	4	74	\$65.31	\$4,831
Female.....	677	677	21,400	3	94	\$64.37	\$6,045
Total¹.....	9,163	677	235,100	4	75	\$65.22	\$4,921

¹ Includes employees whose sex and/or age was not reported.

NOTE.-- Beneficiary figures based on payments made in the year, regardless of the benefit year for which payment was made. Qualified employees for 2011-2012 benefit year are those qualified on the basis of 2010 compensation.

Table C6.--Beneficiaries and selected averages for benefit year 2011-2012 sickness, by age and sex

Age on birthday in 2011	Number of beneficiaries				Average per beneficiary		
	Total	Female	Qualified employees	Per 100 qualified employees	Compensable days of unemployment	Daily benefit	Amount of benefits for year
Under 25.....	64	9	3,400	2	49	\$65.52	\$3,217
25 to 29.....	630	113	15,200	4	55	65.59	3,578
30 to 34.....	1,239	208	23,900	5	56	65.86	3,698
35 to 39.....	1,575	206	27,600	6	59	65.85	3,869
40 to 44.....	1,936	195	30,700	6	63	65.74	4,170
45 to 49.....	1,911	263	27,700	7	66	65.89	4,371
50 to 54.....	2,473	307	33,200	7	69	65.63	4,515
55 to 59.....	4,203	358	44,300	9	74	65.88	4,846
60 to 64.....	2,343	197	24,800	9	74	66.02	4,879
65 to 69.....	340	53	3,500	10	60	63.62	3,816
70 and older.....	34	9	600	5	54	50.69	2,736
ALL BENEFICIARIES							
Male.....	14,830	213,600	7	68	\$65.85	\$4,450
Female.....	1,918	1,918	21,400	9	63	\$65.09	\$4,127
Total¹.....	16,748	1,918	235,100	7	67	\$65.77	\$4,413

¹ Includes employees whose sex and/or age was not reported.

NOTE.-- Beneficiary figures based on payments made in the year, regardless of the benefit year for which payment was made. Qualified employees for 2011-2012 benefit year are those qualified on the basis of 2010 compensation.

Table C7.--Beneficiaries and average compensable days for benefit year 2011-2012 sickness, by type of sickness

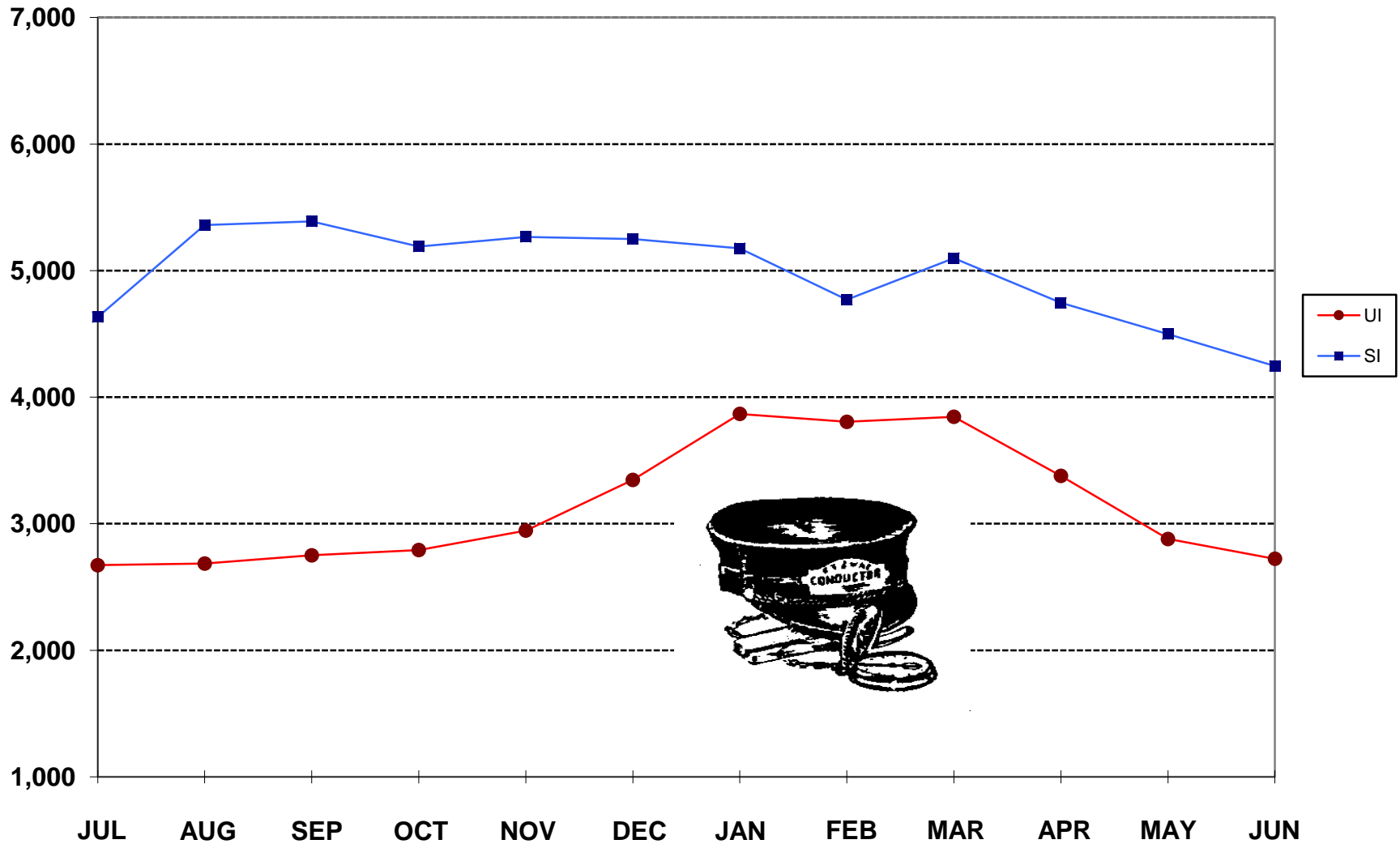
International list no.	Type of sickness	Beneficiaries	Average compensable days of sickness
001-139	Infective and parasitic diseases	85	48
140-239	Neoplasms.....	935	67
240-279	Endocrine, nutritional and metabolic diseases and immunity disorders.....	275	67
280-289	Diseases of the blood and blood forming organs.....	21	78
290-319	Mental disorders.....	1,800	70
320-389	Diseases of the nervous system and sense organs.....	707	64
390-459	Diseases of the circulatory system.....	1,264	67
460-519	Diseases of the respiratory system.....	430	53
520-579	Diseases of the digestive system.....	1,029	38
580-629	Diseases of the genitourinary system.....	210	51
630-679	Pregnancy, childbirth, and the puerperium, total ¹	248	45
680-709	Diseases of the skin and subcutaneous tissue.....	155	45
710-739	Diseases of the musculoskeletal system and connective tissue.....	3,733	85
740-759	Congenital anomalies.....	213	55
780-799	Symptoms and ill-defined conditions and perinatal morbidity and mortality.....	1,397	61
800-999	Injury and complications of poisoning.....	4,246	65
Total.....		16,748	67

¹ Includes normal periods of pregnancy and the puerperium in addition to morbidities included in the classifications numbered 630-679.

NOTE.--Type of sickness is determined by the first sickness for which payment was made. Classification by sickness group is in accordance with The International Classification of Diseases, Clinical Modification (ICD-9-CM), United States Government.

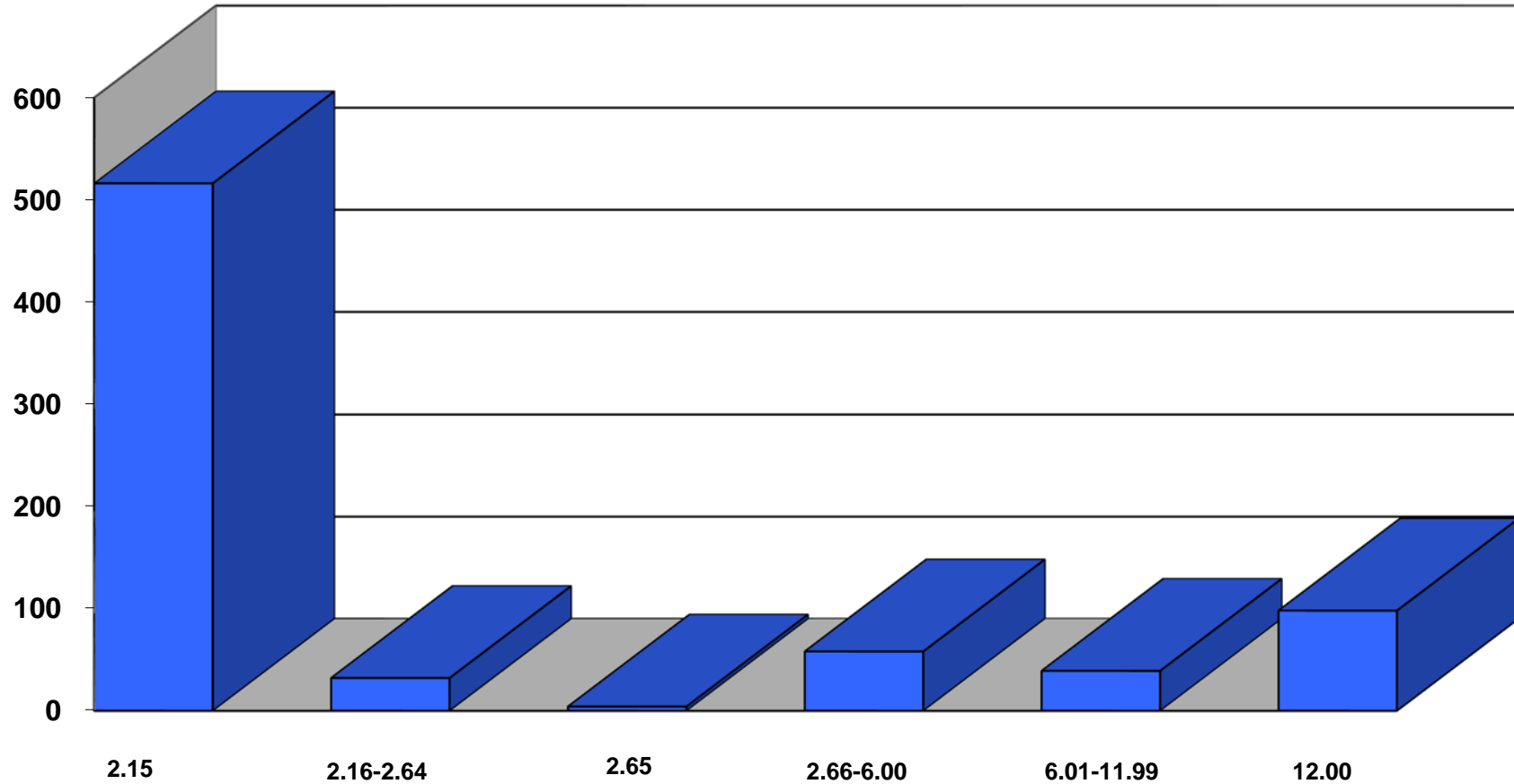
**TABLE C8. - UI & SI BENEFICIARIES
BY MONTH FOR BENEFIT YEAR 2011-2012**

Beneficiaries



**TABLE C9. - EXPERIENCE RATING DISTRIBUTION,
BY NUMBER OF EMPLOYERS, 2012**

EMPLOYERS



CONTRIBUTION RATE (percent)