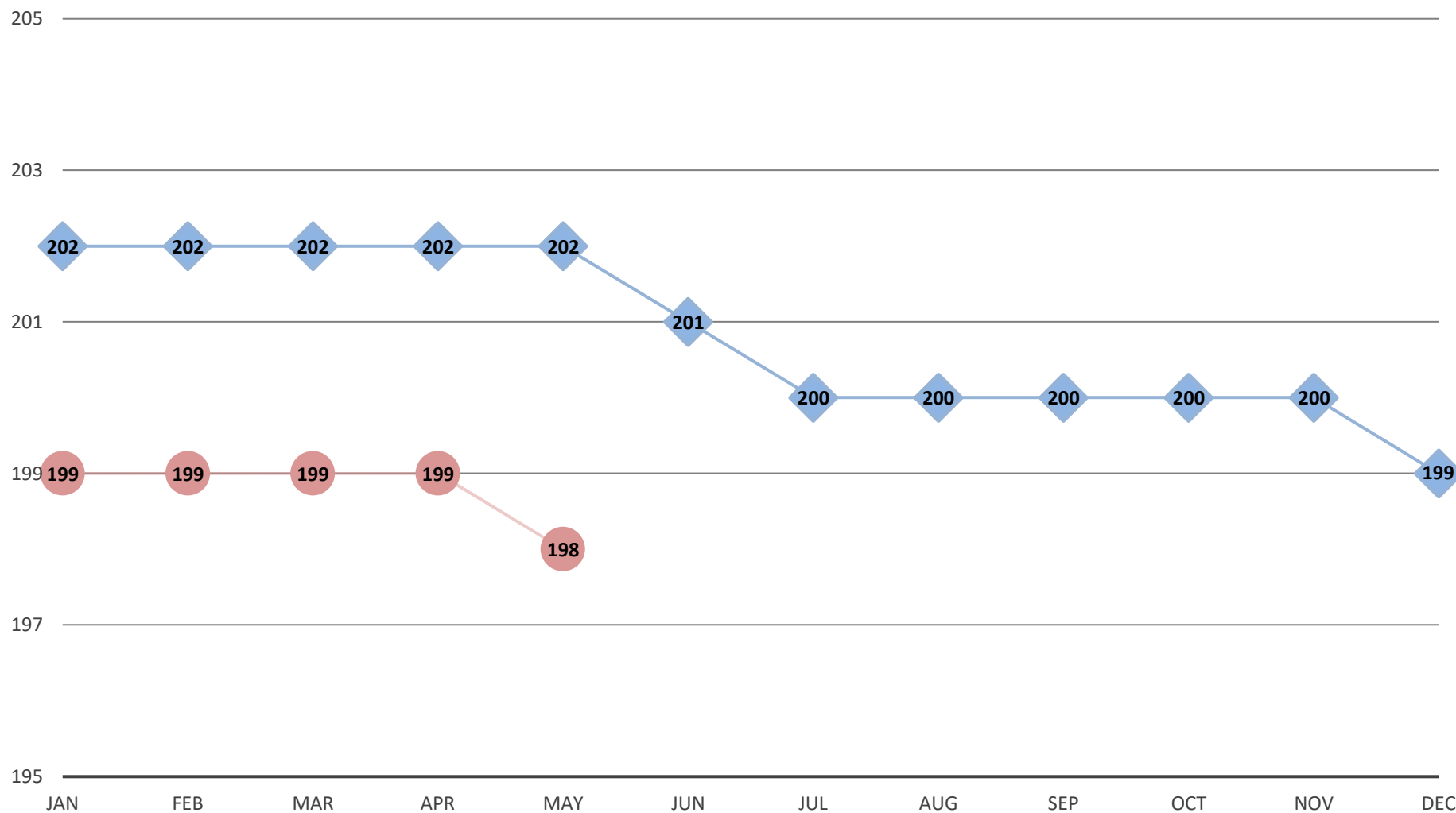


## AVERAGE RAILROAD EMPLOYMENT (IN THOUSANDS) JANUARY 2024 - MAY 2025



**The preliminary calendar year 2024 average was 201,000. In December 2025, all figures will be revised when 2024 data is finalized.**

—◆— 2024    —●— 2025

Note: Employment estimates rely on monthly Class I reports to the Surface Transportation Board.