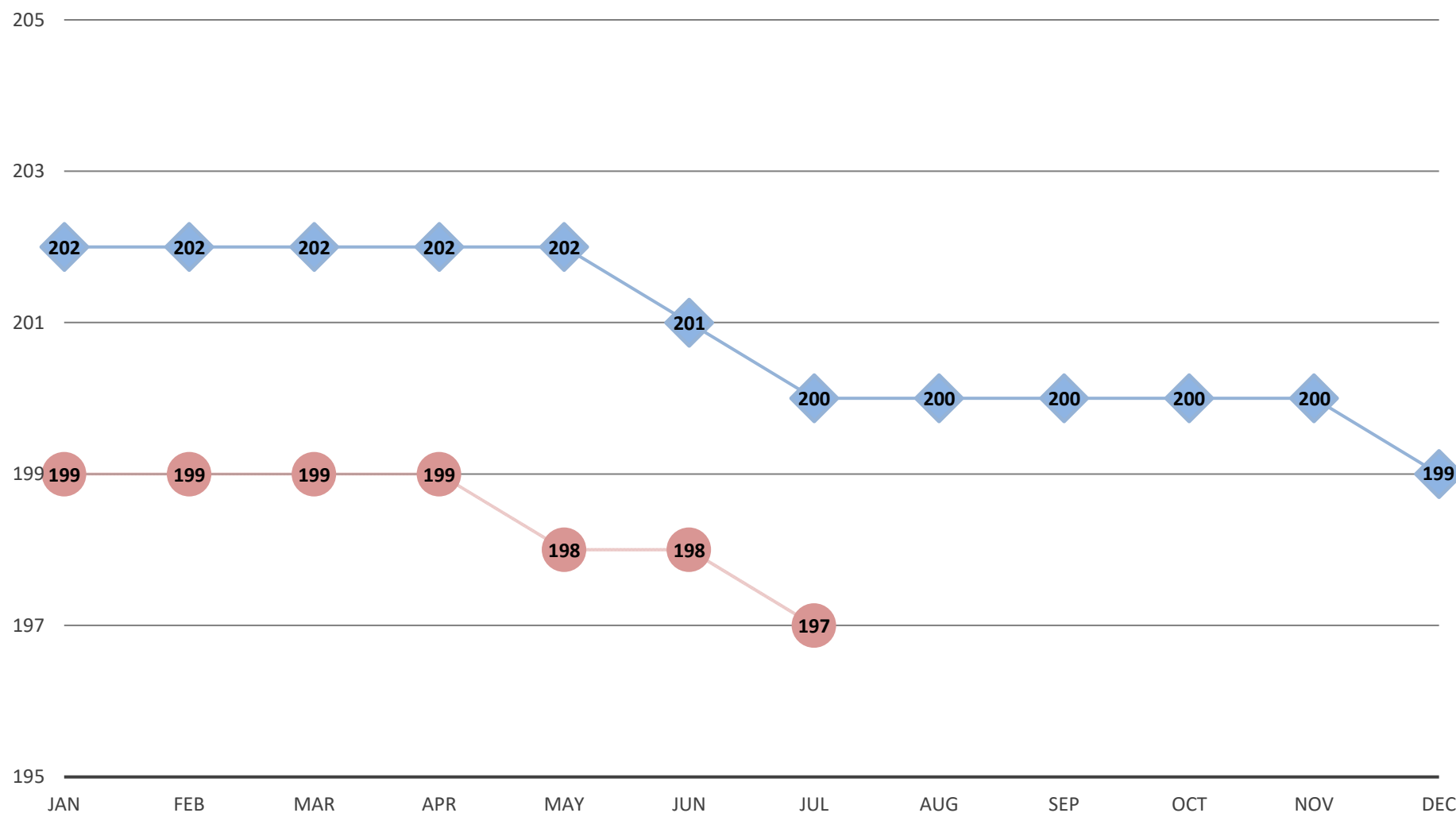


AVERAGE RAILROAD EMPLOYMENT (IN THOUSANDS) JANUARY 2024 - JULY 2025



The preliminary calendar year 2024 average was 201,000. In December 2025, all figures will be revised when 2024 data is finalized.

—◆— 2024 —●— 2025

Note: Employment estimates rely on monthly Class I reports to the Surface Transportation Board.