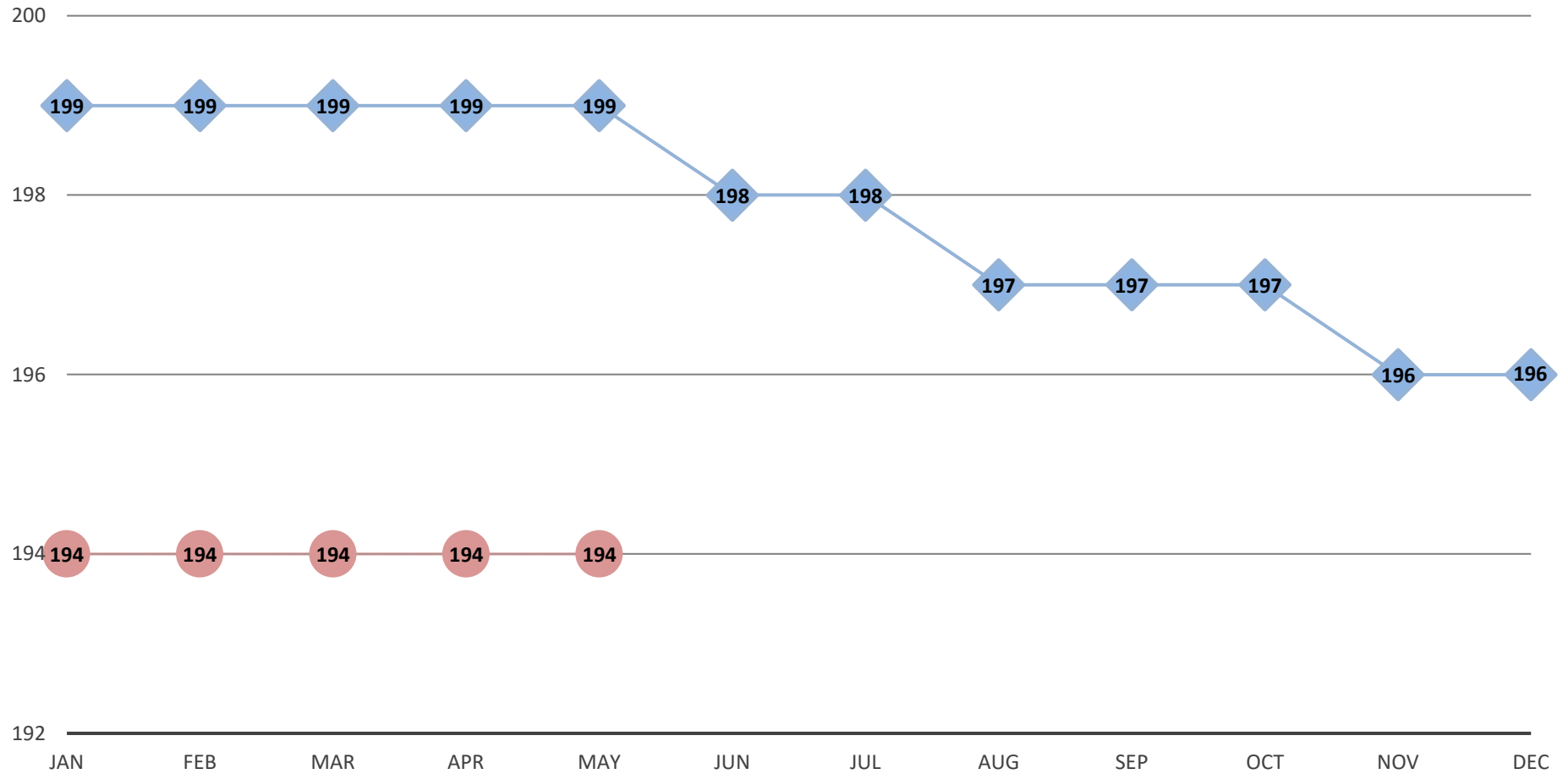


AVERAGE RAILROAD EMPLOYMENT (IN THOUSANDS) JANUARY 2025 - MAY 2026



The preliminary calendar year 2025 average is 198,000. In December 2026, all figures will be revised when 2025 data is finalized.

◆ 2025 ● 2026

Note: Employment estimates rely on monthly Class I reports to the Surface Transportation Board.